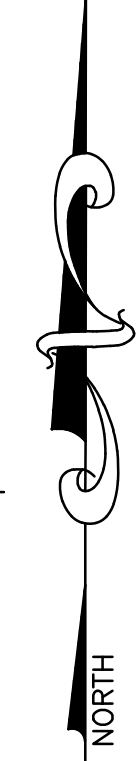
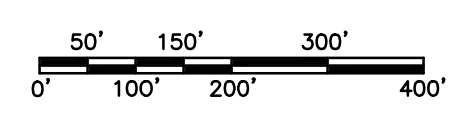
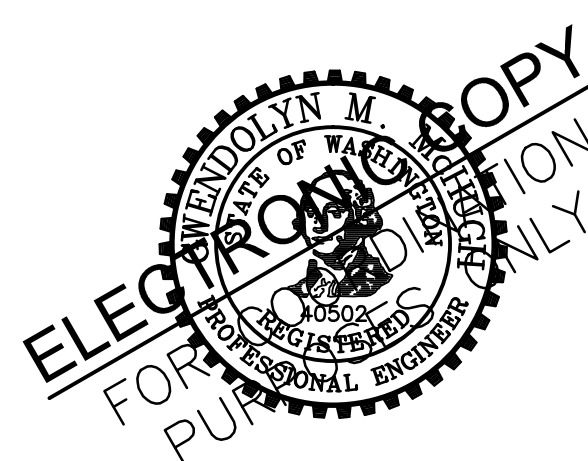
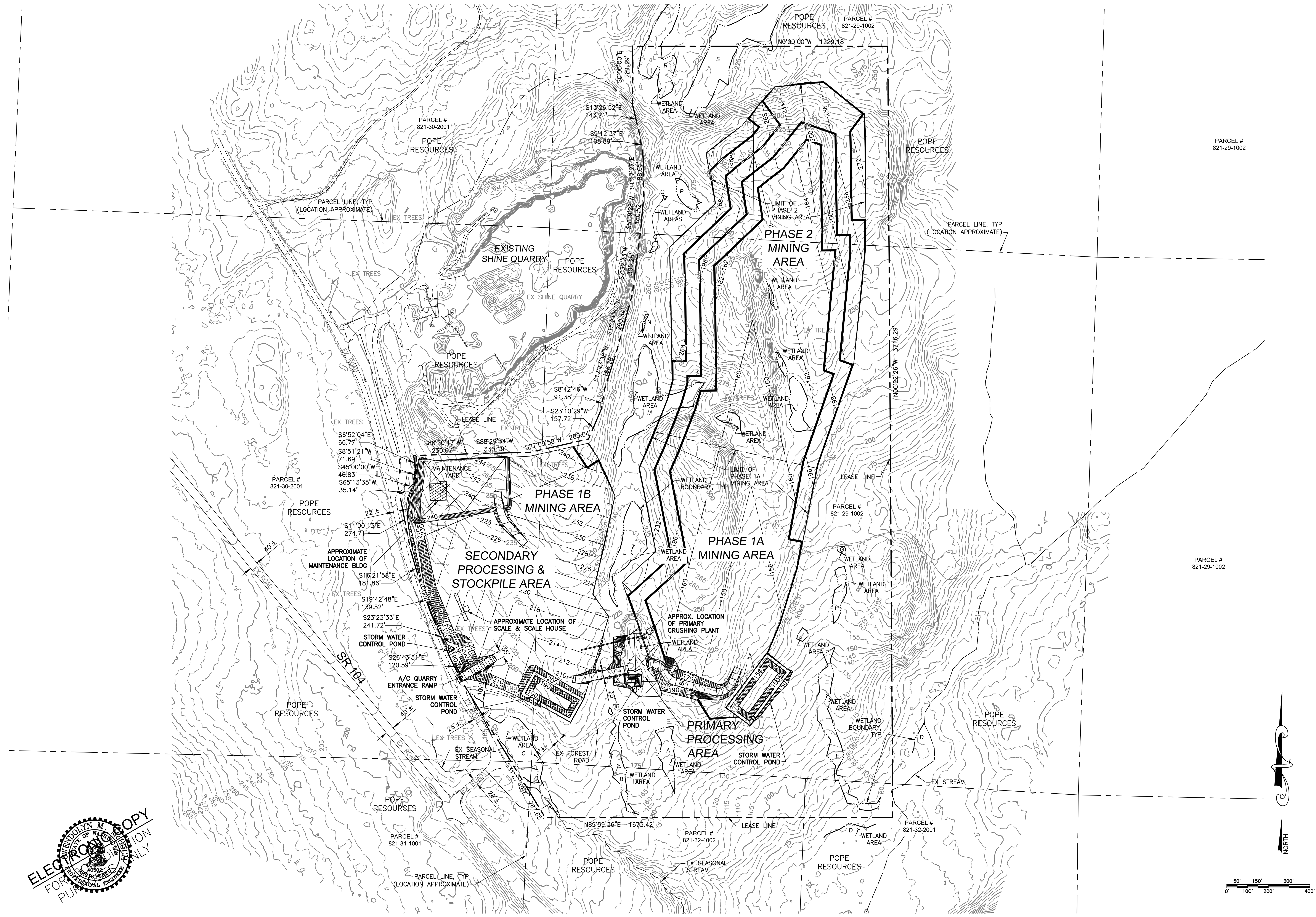


SECTION 29, T 28 N, R 1 E, W.M.



IMO SHINE QUARRY
SHINE, WASHINGTON

Layton & Sell, Inc., P.S.
12515 Willows Road NE Suite 205
Kirkland, Washington 98034-8795
Office: (425)925-1735 Fax: 825-1363
coastal & civil engineers

EXHIBIT 1 - GENERAL SITE PLAN

DESIGNED: JDS/GMM	NO.	NO.	NO.
DRAWN: GMM/JDS	NO.	NO.	NO.
CHECKED:	NO.	NO.	NO.
APPROVED:	NO.	NO.	NO.
DATE: FEB. 22, 2010	NO.	NO.	NO.

PROJECT NO. 177-09
REVISION NO.